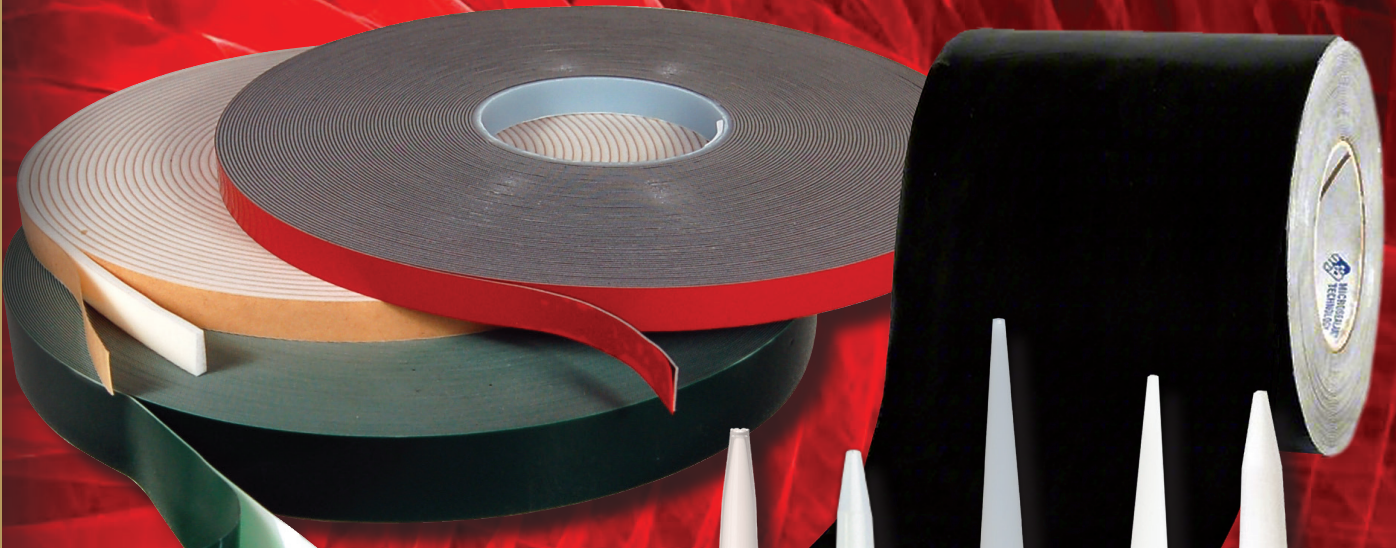


INNOVATIVE PRODUCTS FOR CHALLENGING APPLICATIONS

# LAVANTURE PRODUCTS

EST. 1969 CO.

TRIMS-SEALS-TAPES-ADHESIVES



LIMITED WARRANTY. **WARNING: HYBRID SEALANT**



For more than 50 years, LaVanture Products has listened to the needs of our customers. We have invested in our future to help build yours. From hands on product design to on-hand inventory, LaVanture strives to offer the most advanced technologies to the industry. We have hundreds of adhesive and sealant options that are used in RV, Marine, Utility Trailer, and Speciality Product markets.

LaVanture has hand selected leading manufacturers to build and produce quality products with on-time delivery you have been accustomed to as a partner of LaVanture Products.

Whether your application requires an adhesive or sealant, LaVanture offers both in 'gun-grade' or tape form. Our technologies range from Latex to high bond tapes.

Contact your Account Manager today or e-mail us at: [sales@lavanture.com](mailto:sales@lavanture.com)

## THE LAVANTURE ADVANTAGE...

Since 1969 LaVanture Products Company has been providing the best total package of products and services to our customers. We invest in our future so we can continue to meet market demands and customer needs. When you select LaVanture Products, you provide your business with the LaVanture advantage:

- **Quick & Personal Response**
- **Quality Products**
- **Continuous Innovation**
- **Competitive Pricing**
- **Courteous Service**
- **On time Delivery**



This Trims, Seals and Foam Tape catalog features innovation, and high quality products to meet the challenging applications of today's markets.

### Our Goal is Simple:

- **Distribute high quality products that meet customer needs at a fair price with on-time delivery.**

We have been providing customers with high quality products to meet the challenging applications of today's markets. LaVanture stocks and distributes a full line of quality Sealants, Trims, Seals, and Foam Tape making it the single source leader for superior sealing solutions to the O.E.M. market. The sealant products are available in cartridges, sausages, and drums.

LaVanture Products is a major distributor of many hardware products from leading manufacturers all across the country and world. Most products are in stock and available for immediate shipment. We also carry a wide range of products to seal your applications. LaVanture has a full line of "in stock" EPDM extrusions and a full line of caulks and sealants to handle any application. Our foam tapes are automotive grade and we stock over 200 sizes and styles at all times.

Our warehouse has over 10,000 different parts designed by us for the RV and Marine OEM markets. We use more than five extruders and injection molders to manufacture our parts. The parts are made to our specifications and we stand behind what we sell.

LaVanture has you covered from start to finish no matter what you're manufacturing. Give us a call today or visit our website to view our complete line of product catalogs.

# TABLE OF CONTENTS

<b>LaVanture Advantage</b> .....	<b>Page 1</b>
<b>Automotive Seals</b> .....	<b>Page 3-4</b>
<i>Hollow Bulb seals</i>	
<b>PVC Foam Sealing Tapes</b> .....	<b>Page 5-9</b>
<i>Light, Medium, Heavy Density</i>	
<b>Specialty Foam Tapes</b> .....	<b>Page 10-11</b>
<i>TPE, PE, PVC, Acrylic, Neoprene</i>	
<b>Hi Bond Tapes</b> .....	<b>Page 12</b>
<i>Solid Acrylic, Impregnated Foam, VHB, GHB</i>	
<b>Butyl Tapes</b> .....	<b>Page 13</b>
<i>EPDM, Cross-Linked, Rubber</i>	
<b>Specialty Seals</b> .....	<b>Page 14</b>
<i>EPDM</i>	
<b>Standard Edge Trim</b> .....	<b>Page 15-16</b>
<i>PVC Pinch, Pinch with Bulb</i>	
<b>Silicone and Acrylic Sealants</b> .....	<b>Page 17-20</b>
<i>Acetoxy, Latex, Neutral Cure</i>	
<b>Adhesives and Sealants</b> .....	<b>Page 21-25</b>
<i>Elastomeric, Hybrid Polymer, Latex, Polyurethane</i>	
<b>EternaBond Sealant Tape</b> .....	<b>Page 26</b>
<i>Micro-sealant RV Seal, Roof Seal, Anti-wick</i>	
<b>Floor Adhesive</b> .....	<b>Page 27</b>
<i>Water-based, Acrylic-based</i>	
<b>Structural Adhesives</b> .....	<b>Page 28</b>
<b>Adhesives Technical Specifications</b> .....	<b>Page 29</b>
<b>Industry Application Chart</b> .....	<b>Page 30</b>



All of these products meet our quality standards and have passed a rigid testing program. If we sell it ...we stand behind it!



**NEW 2-UP SEALS**

This new product is 2 seals extruded as one with a thin membrane that you can tear apart, saving you production time. Call for pricing and availability.

**SPECIFICATIONS**

Most LaVanture EPDM rubber seals are medium density, 45-50 durometer. Standard Rubber Manufacturers Association (RMA) tolerances apply to all the EPDM rubber seals.

**ADHESIVES FOR EPDM**

**PSA :** Pressure Sensitive Adhesive tape.

**HATS:** Orange or Red liner represents 'Heat Activated Tape' for adhesive with extreme holding power.'

**FILAMENTS:** PSA with embedded fiberglass fibers for greater stability.

**APPLICATIONS**

- Ramp Doors
- Slide Outs
- Door Hatches
- Live Wells
- Concession Doors

**SPECIALITY SEALS**

Custom designed profiles and colors are also available to meet special applications. Please call for information.

**Hollow D, Hollow P, Ribbed Rectangle and Speciality Seals**

**Hollow D Bulb Seals**

Stock No.	Width x Height	Color	Adhesive	Ctn. Qty
LP1085	.354" x .205"	Black	PSA	1000'
LP1153W	.375" x .250"	White	PSA	1000'
LP105	.375" x .438"	Black	PSA	500'
LP108	.500" x .360"	Black	PSA	500'
LP108W	.500" x .360"	White	PSA	500'
LP101	.500" x .500"	Black	PSA	500'
LP202	.500" x .500"	Black	PSA	450'
LP5036-H	.500" x .696"	Black	HATS	500'
LP5036-PSA	.500" x .696"	Black	PSA	500'
LP5080-H	.500" x .800"	Black	HATS	500'
LP109	.610" x .360"	Black	PSA	500'
LP2601-PSA	.640" x .500"	Black	PSA	500'
LP119	.750" x .375"	Black	PSA	250'
LP119-500	.750" x .375"	Black	PSA	500'
LP135	.750" x .562"	Black	PSA	250'
LP135-H	.750" x .562"	Black	HATS	250'
LP135W-H	.750" x .562"	White	HATS	250'
LP135-FT	.750" x .562"	Black	FILAMENT	500'
LP1705	.625" x .400"	Black	PSA	500'
LP128	.750" X .750"	Black	PSA	200'
LP1750	.825" x .760"	Black	PSA	150'
LP1750-H	.825" x .760"	Black	HATS	400'
LP691	.875" x 1.00"	Black	PSA	250'
LP691-H	.875" x 1.00"	Black	HATS	250'
LP691 W-H	.875" x 1.00"	White	HATS	250'
LP402	1.50" x .500"	Black	PSA	250'

**Hollow P Bulb Seals**

Stock No.	Width x Height	Color	Adhesive	Ctn. Qty
LP589	1.250" x .848"	Black	PSA	200'
LP589-H	1.250" x .848"	Black	HATS	250'
LP589NA	1.250" x .848"	Black	NONE	250'
LP2452-H	2.625" X .875"	Black	HATS	100'

**Rectangle Seals**

Stock No.	Width x Height	Color	Adhesive	Ctn. Qty
LP113	.375" x 188"	Black	PSA	1000'
LP2897	.500" x .300"	Black	PSA	500'
LP376	.589" x .123"	Black	PSA	1000'
LP103	.625" x .375"	Black	PSA	400'

**Speciality Seals**

Stock No.	Width x Height	Color	Adhesive	Ctn. Qty
SP0445	700" x 1.775" Wiper	Black	PSA	200'
LP2028	.905" x .290"	Black	NONE	500'
LP214-H	.950" x .710"	Black	HATS	500'

**2 Up Seals**

Stock No.	Width x Height	Color	Adhesive	Ctn. Qty
LP113-2UP	.375" x .188"	Black	PSA	1000'
LP103-2UP	.625" x .375"	Black	PSA	400'
LP119-2UP	.750" x .375"	Black	PSA	500'
LP135-2UP	.750" x .562"	Black	PSA	250'
LP128-2UP	.750" x .750"	Black	PSA	200'
LP125-2UP	.775" x .500"	Black	PSA	250'
LP5034-PSA-2UP	.650" x .540"	Black	PSA	300'

**Adhesives:**

Adhesives are available for a wide variety of applications in two formats: 3M™s heat activated tape system, (HATS) and a pressure sensitive (PSA) format. Both systems have been tested and have passed our rigid performance requirements.

**Custom Seals**

Custom designed profiles and colors are also available to meet special applications. Please call for information.



LP1085

LP1153

LP105

LP108

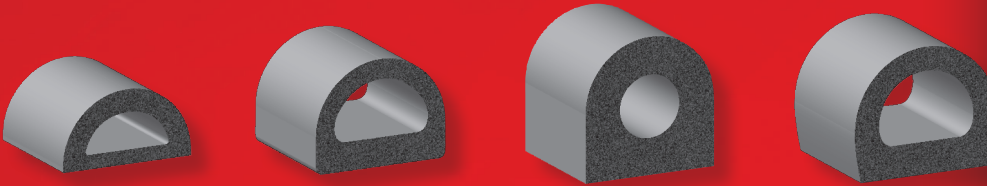


LP101

LP202

LP5036-H

LP109

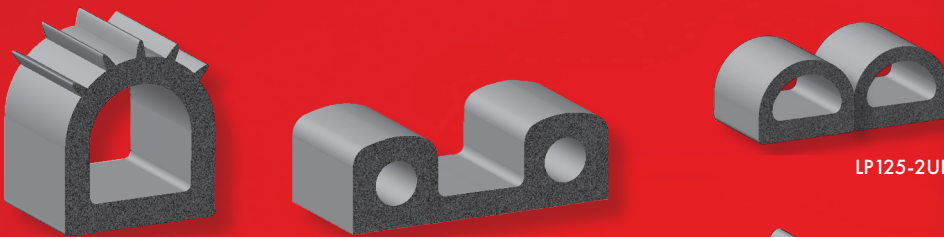


LP119

LP135

LP128

LP1750



LP691

LP402

LP125-2UP



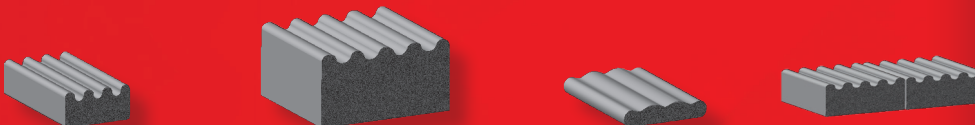
LP5080-H



LP589

LP2028

LP103-2UP

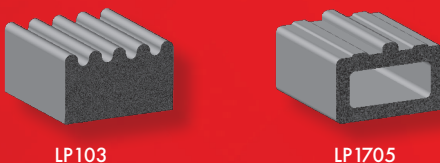


LP113

LP2897

LP376

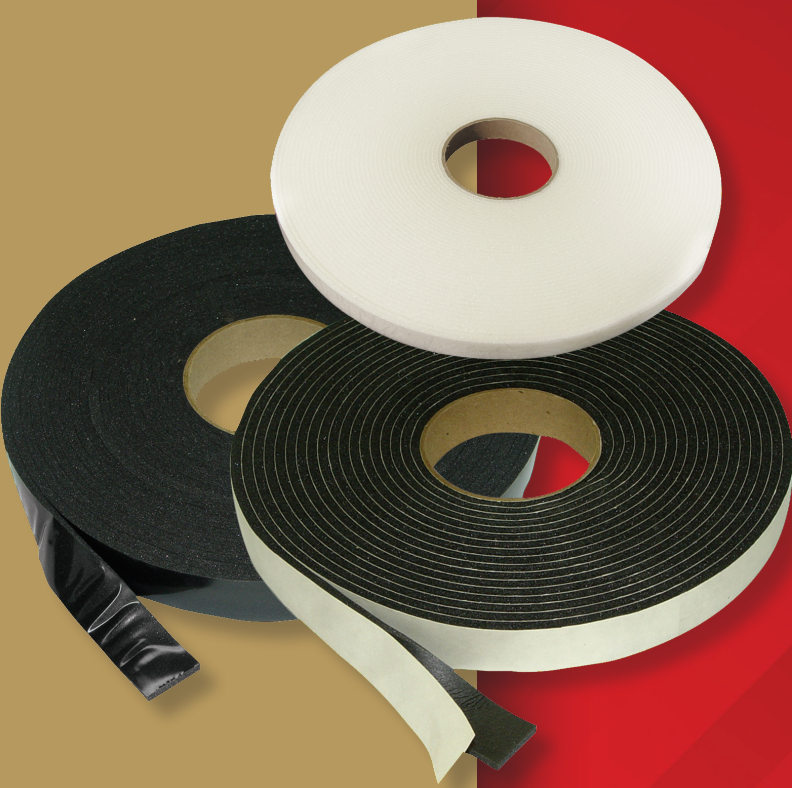
LP113-2UP



LP103

LP1705





## Light Density Foam Cap Tape®

Cap Tape® was developed initially to provide an economical seal between pickup truck caps and body side rails. Today, Cap Tape® is used effectively for a variety of noncritical industrial and commercial sealing applications. The tape flexes to fill-in and seal irregular surfaces and conditions against vibration and rattles. TP Series is cast-on 83# white paper and TM Series is cast-on 1.5 polyester film.

### Typical Industry

#### Applications Include:

- Truck Caps
- Recreational Vehicle
- Automotive Aftermarket
- Weather Stripping

DIE CUTS for your application available for quotes.

Rolls may contain usable splices.

#### Physical Properties \*

Density and Hardness:	6 lbs./cu.ft./20 (shore 00)
Compression Deflection:	1.8 psi @ 25%
Compression Set:	7 @ 25%
Tensile Strength:	22 psi
Elongation Percent:	140
Thermal Conductivity:	0.26 (k factor)
Service Temperature:	-40 to 180
Application Temperature:	50 to 110

\* Information shown as a guide only and should not be used as specification data.

#### PVC Foam Cast-on 83# White Paper

Stock No.	Thickness x Width	Length	Color	Carton
TP750B	.188" x .750"	30'	Black	40
TP100B	.188" x 1.00"	30'	Black	32
TP125B	.188" x 1.25"	30'	Black	24
TP150B	.188" x 1.50"	30'	Black	20
TP200B	.188" x 2.00"	30'	Black	16
TP250B	.188" x 2.50"	30'	Black	12

#### PVC Foam Cast-on 1.5 mil Polyester Film

TM100B	.188" x 1.00"	30'	Black/PE Film	32
TM125B	.188" x 1.25"	30'	Black/PE Film	24
TM150B	.188" x 1.50"	30'	Black/PE Film	20
TM200B	.188" x 2.00"	30'	Black/PE Film	16
TM250B	.188" x 2.50"	30'	Black/PE Film	12
TMV615042812	.250" x 1.875"	12.5'	Black/PE Film	16
TMV6150428	.250" x 2.50"	16'	Black/PE Film	15
TMV61504283	.250" x 2.50"	3.33'	Black/PE Film	72
TMV6150608V	.375" x .500"	30'	Black/PE Film	48

Our TLD Series foam tapes are closed cell PVC that are ideal where cost is a critical factor. Designed to seal, cushion, insulate, and dampen vibration in a variety of industrial applications.

#### TLD Series

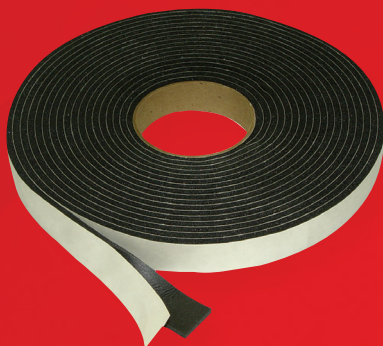
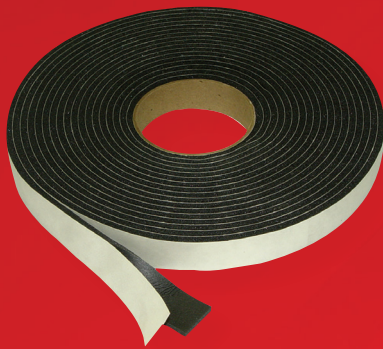
Stock No.	Thickness x Width	Length	Color	Carton
TLDB12575A	.125" X .750"	75'	Black	32
TLDB37575A	.375" x .750"	25'	Black	32
TLDB50075A	.500" x .750"	25'	Black	32
TLDG375625A	.375" x .625"	50'	Gray	12
TLDG500125A	.500" x 1.25"	25'	Gray	18
TLDB18812550	.188" x 1.25"	50'	Black	18

## Light Density Vinyl Foam Tape

Series TPV7100 general purpose foam tapes are light density closed-cell Polyvinyl Chloride product, cast-on 7 mil clay coated paper, manufactured for use as a positive seal for irregular surfaces and/or for creating a tight seal on radius curve applications. This light density foam compresses easily and offers conformability, strength and resilience. It also offers excellent resistance to oxidation, weather and fungi.

### Typical Industry Applications Include:

- Automotive • Construction • Recreational Vehicle
- Consumer Electronics • Heating • Air Conditioning



Density and Hardness:	7 lbs./cu.ft./ 14 (shore 00)
Compression Deflection:	.8 psi @ 25%
Compression Set:	4 @ 25%
Tensile Strength:	25 psi.
Elongation Percent:	150
Thermal Conductivity:	0.27 (k factor)
Service Temperature:	-40 to 180
Application Temperature:	50 to 110

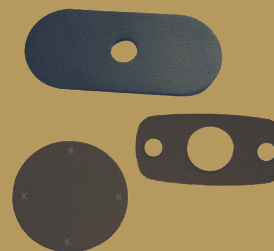
\* Information shown as a guide only and should not be used as specification data.

Rolls may contain usable splices.

### PVC Foam Cast-on Paper

Stock No.	Thickness x Width	Length	Color	Carton
TPV7100208	.125" x .500"	75'	Black	48
TPV7100210	.125" x .625"	75'	Black	38
TPV7100212	.125" x .750"	75"	Black	32
TPV7100216	.125" x 1.00"	75'	Black	24
TPV7100306	.188" x .375"	50'	Black	64
TPV7100308	.188" x .500"	50'	Black	48
TPV7100310	.188" x .625"	50'	Black	38
TPV7100312	.188" x .750"	50'	Black	32
TPV7100316	.188" x 1.00"	50'	Black	24
TPV7100324	.188" x 1.50"	50'	Black	16
TPV7100332	.188" x 2.00"	50'	Black	12
TPV7100404	.250" x .250"	35'	Black	96
TPV7100408	.250" x .500"	35'	Black	48
TPV7100410	.250" x .625"	35'	Black	38
TPV7100412	.250" x .750"	35'	Black	32
TPV7100416	.250" x 1.00"	35'	Black	24
TPV7100420	.250" x 1.250"	35'	Black	18

Ask us about our "LD" Series, a great option for applications that do not require to be automotive certified. This cost effective closed cell PVC material is generally used to seal, cushion,insulate, and dampen vibration in a variety of applications. All PVC tapes come with a standard PSA unless otherwise specified or requested.

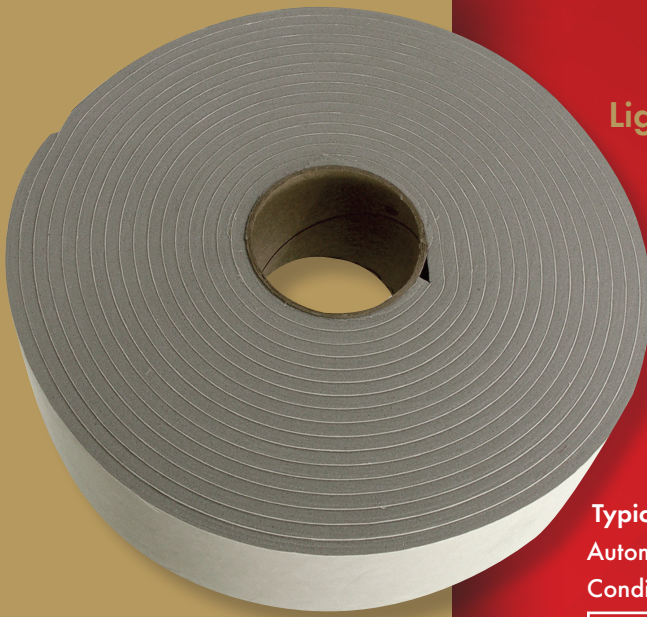


### DIE CUTS

Die-cutting provides that next level of finished aesthetics while providing air-tight and water-tight seals to your application. LaVanture has 'in stock' die cuts and we have them to help you design a custom die cut seal. These parts are available with or without adhesive, individual pieces, or kiss-cut on a roll. Contact your Account Manager today!



PVC FOAM SEALING TAPES



## Light Density Vinyl Foam Tape

Series TPV8100 and TMV8150 general purpose foam tapes are light density closed-cell Polyvinyl Chloride products. TPV8100 is cast-on 5 mil kraft 83# paper and TMV8150 is cast-on 1.5 mil polyester film to provide dimensional stability. Both are manufactured for use as a positive seals for irregular surfaces or for creating a tight seal on radius curve applications. This light density foam compresses easily, offers conformity, strength, and resilience. It creates a life long seal against air, moisture, light, and dust penetration.

### Typical Industry Applications Include:

Automotive • Construction • Recreational Vehicle • Heating • Air Conditioning • Marine

#### Physical Properties \*

Density and Hardness:	8 lbs./cu.ft./25 (shore 00)
Compression Deflection:	2 psi @ 25%
Compression Set:	4 @ 25%
Tensile Strength:	30 psi.
Elongation Percent:	150
Thermal Conductivity:	0.27 (k factor)
Service Temperature:	-40 to 180
Application Temperature:	50 to 110

\* Information shown as a guide only and should not be used as specification data.

#### PVC Foam Cast-on Paper

Stock No.	Thickness x Width	Length	Color	Carton
TPV8100204	.125" x .250"	75'	Gray	96
TPV8100206	.125" x .375"	75'	Gray	64
TPV8100208	.125" x .500"	75'	Gray	48
TPV8100212	.125" x .750"	75'	Gray	32
TPV8100216	.125" x 1.00"	75'	Gray	24
TPV8100312	.188" x .750"	50'	Gray	32
TPV8100408	.250" x .500"	35'	Gray	48
TPV8100412	.250" x .750"	35'	Gray	32
TPV8100424-PW	.250" x 1.50"	35'	Polar White	16
TPV8100612	.375" x .750"	30'	Gray	32
TPV8100808	.500" x .500"	25'	Gray	48
TPV8100816	.500" x 1.00"	25'	Gray	24
TPV8100832	.500" x 2.00"	25'	Gray	12

#### PVC Foam Cast-on Film

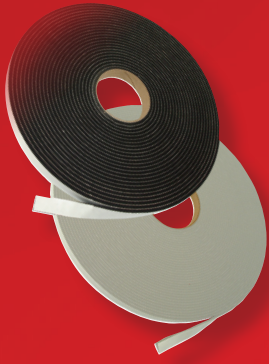
TMV8150212	.125" x .750"	75'	Gray	32
TMV8150216	.125" x 1.00"	75'	Gray	24
TMV8150240	.125" x 2.50"	75'	Gray	8
TMV8150408V	.250" x .500"	35'	Gray	48
TMV8150412	.250" x .750"	35'	Gray	32
TMV8150416	.250" x 1.00"	35'	Gray	24
TMV8150616	.375" x 1.00"	30'	Gray	24

Custom Sizes Available

#### AVAILABILITY:

All PVC foam tapes come standard with Pressure Sensitive Adhesive (PSA). Additional adhesive options are available upon request. Contact your account manager for more details.

Rolls may contain usable splices.



## Medium Density Vinyl Foam Tape

Series TPV1100 and TPV1500 foam tapes are medium density closed-cell Polyvinyl Chloride products. Both are cast-on 5 mil kraft 80# calendared paper for use as a "heavy duty" seal where strength and wear resistance are required. This medium density foam tape absorbs shocks, deadens sound, cushions, and limits excess vibration.

### Typical Industry Applications Include:

- Automotive • Construction • Recreational Vehicle
- Heating • Air Conditioning



#### Physical Properties\*

	TPV1100 Series	TPV1500 Series
Density and Hardness:	11 lbs./cu.ft./28 (shore 00)	15 lbs./cu.ft./40(shore 00)
Compression Deflection:	5 psi @ 25%	7 psi @ 25%
Compression Set:	17 @ 25%	8 @ 25%
Tensile Strength:	50 psi.	80 psi.
Elongation Percent:	130	160
Thermal Conductivity:	0.28 (k factor)	0.30 (k factor)
Service Temperature:	-30 to -120	-30 to -200
Application Temperature:	50 to -110	50 to -110

\* Information shown as a guide only and should not be used as specification data.

PVC FOAM SEALING TAPES

#### PVC Foam Cast-on Paper

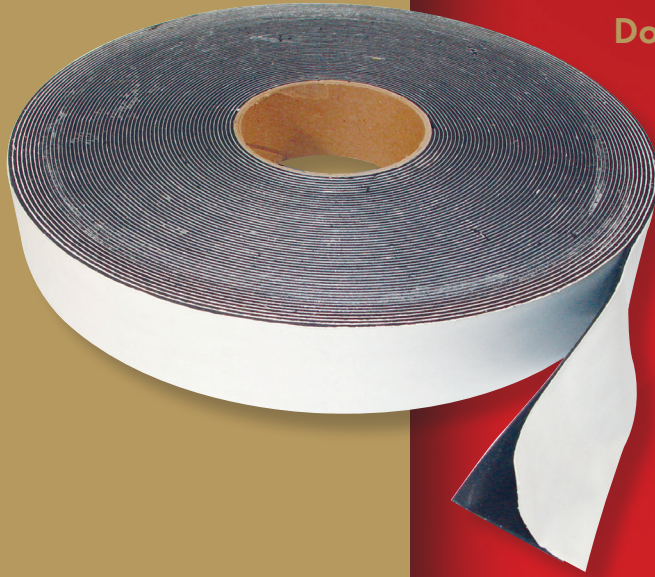
Stock No.	Thickness x Width	Length	Color	Carton
TPV11100104	.063" x .250"	150'	Gray	96
TPV11100108	.063" x .500"	150'	Gray	48
TPV11100116	.063" x 1.00"	150'	Gray	24
TPV11100208	.125" x .500"	75'	Gray	48
TPV15100112	.063" x .750"	150'	Black	32
TPV1510SA	.125" x .250"	75'	Black	96
TPV15100206	.125" x .375"	75'	Black	64
TPV15100208	.125" x .500"	75'	Black	48
TPV15100212	.125" x .750"	75'	Black	32
TPV15100203	.125" x 3.00"	75'	Black	8
TPV15100312	.188" x .750"	50'	Black	32
TPV15100320	.188" x 1.25"	50'	Black	18
TPV15100372	.188" x 4.50"	50'	Black	12
TPV15100408	.250" x .500"	35'	Black	48
TPV15100412	.250" x .750"	35'	Black	32
TPV15100416	.250" x 1.00"	35'	Black	24
TPV15100432	.250" x 2.00"	35'	Black	12
TPV15100608	.375" x .500"	30'	Black	48
TPV15100648	.375" x 3.00"	30'	Black	8

Custom Sizes Available

Rolls may contain usable splices.

#### AVAILABILITY:

All PVC foam tapes come standard with Pressure Sensitive Adhesive (PSA). Additional adhesive options are available upon request. Contact your account manager for more details.



## Double Face Vinyl Glazing Tape

TPV1520 Series is a medium density closed-cell Polyvinyl Chloride foam coated on both sides with an aggressive, pressure-sensitive adhesive, and an 84# polycoated two-side brown kraft liner.

## TPV2500 Series Heavy Density Vinyl Foam Tape

TPV2500 Series is a heavy density closed-cell Polyvinyl Chloride foam. Designed for use in the most demanding foam sealing or cushioning applications. High internal strength resists pressure from outside forces and high hardness resists deterioration.

### Typical Industry Applications Include:

- Automotive • Construction • Recreational Vehicle
- Heating • Air Conditioning • Marine

#### Physical Properties\*

	TPV1520 Series	TPV2500 Series
Density and Hardness:	15 lbs./cu.ft./40(shore 00)	25 lbs./cu.ft./58(shore 00)
Compression Deflection:	7 psi @ 25%	14 psi @ 25%
Compression Set:	8 @ 25%	6 @ 25%
Tensile Strength:	80 psi.	130 psi.
Elongation Percent:	60	110
Thermal Conductivity:	0.30 (k factor)	0.33 (k factor)
Service Temperature:	-30 to -200	-40 to -180
Application Temperature:	50 to -110	50 to -110

\* Information shown as a guide only and should not be used as specification data.

#### PVC Foam Double Sided Adhesive

Stock No.	Thickness x Width	Length	Color	Carton
TPV15200108	.063" x .500"	150'	Black	48
TPV15200112	.063" x .750"	150'	Black	32
TPV15200116	.063" x 1.00"	150'	Black	24
TPV15200424	.250" x 1.50"	35'	Black	16

#### PVC Foam Cast-on Paper

Stock No.	Thickness x Width	Length	Color	Carton
TPV25100016	.031" x 1.00"	150'	Black	12
TPV2510024	.063" x 1.50"	100'	Black	8

Custom Sizes Available

Rolls may contain usable splices.



## Foam Tapes and Bumpers

**Foam Tapes and Bumpers** offer protection for a variety of things including cabinet doors, cutting boards, appliances where quiet protection from nicks is desired.

**Separator/Shipping Foam Pads** provide glass protection during shipment. Ideal for transporting, packing, storage and installation of finished and unfinished glass doors, windows and mirrors.

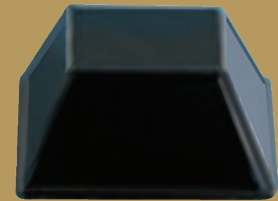
**Polyether Tape** is a flexible fine cell foam tape designed for automotive gasketing applications, especially for RV doors. The high-tack permanent rubber-based pressure sensitive adhesive exhibits a superior balance of tack, peel and holding power on a wide variety of surfaces.

**Polyethylene Foam Tape** is single-coated cross-linked closed cell with rubber-based pressure sensitive adhesive with high tack and high shear.

**Neoprene Tape** is a closed cell EPDM/SBR blend tape featuring a high tack rubber based adhesive with liner on one side.

**PVC Foam Tapes** are cost effective solutions for sealing out light, air, dust and moisture, and cushions against vibration and noise.

**Polyester Urethane Foam** is highly flexible, fine cell, fully clickable foam that is uniform and breathable without voids or tears.



See our Hardware catalog for cabinet bumpers.

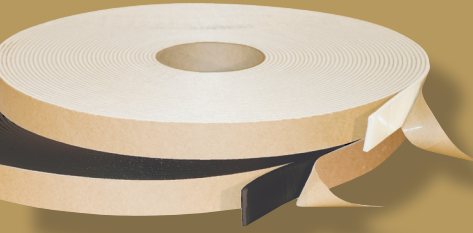
SPECIALTY FOAM TAPES

Foam Tapes and Bumpers				
Stock No.	Thickness x Width	Length	Color	Carton Qty
TPEV25375	.25" x .375"	50'	Black	48
TPER10075	1" X .75"	25'	Gray	24
TPER12510	1.25" x 1"	25'	Gray	18
TPER125250PW	.125"X .25"	75'	White	71
TPER125975PW	.125" X 9.75"	75'	White	6
TPER18750	.1875"x .75"	100'	White	18
TPER25500	.25" x .50"	50'	White	36
TPER37520	.375" x 2"	50'	White	9
TPER37550	.375" x .50"	1000'	Gray	8
TPER426252PB	.0625"x 2"	108'	Black	12
TPER5350PB	.50" x 3"	25'	Black	6
TPER8212125	.125" x 1"	225'	Gray	18
TPER821250	.125" x 50"	75'	Gray	36
TPER845075	.50" x .75"	25'	Gray	24
TPER8511ST	1" x 1"	25'	Black	18
TPER8550ST	.50" x .50"	50'	Black	36
TPER8575ST	.75" x .75"	25'	Black	24

A wide variety of additional products are also available. Please call for information. Rolls may contain usable splices.

LPC Foam tapes provide excellent bonding and barrier properties. Ideal for gasketing, sealing, cushioning, mounting and insulating in a wide range of industries, including HVAC, automotive, OEM assembly applications, and window manufacturing.

SPECIALITY FOAM TAPES



## Polyolefin Glazing Tapes

Our Polyethylene Series are high performance closed-cell, cross linked polyolefin foam tapes, coated on both sides with a lightly aggressive acrylic pressure sensitive adhesive, that adheres well to a wide variety of surfaces. Great for sealing, cushioning, thermal insulations, sound deading, and excessive vibration applications.

**"TEI"** Series is a low cost option that is used in popular applications like shower, mirror, exterior diecut gaskets, and other light duty mounting and general purpose applications.

**DIE CUTS:** Die-cutting provides that next level of finished aesthetics while providing air-tight and water-tight seals to your application. LaVanture has 'in stock' die cuts and we have them to help you design a custom die cut seal. These parts are available with or without adhesive, individual pieces or kiss-cut on a roll. Contact your Account Manager today!

### Polyolefin Tape Single Sided Adhesive

Stock No.	Thickness x Width	Length	Color	Carton Qty
TEI21012575	.125" X .750"	75'	White	32
TEI21012575B	.125" X .750"	75'	Black	32
TEI2102550A	.250" X .500"	50'	Black	12
TEI2102510A	.250" X 1.00"	50'	Black	24
TEI21025143	.250" X 1.438"	50'	Black	16
TEI2102516	.250" X 1.625"	50'	Black	16
TEI210252	.250" X 2.00"	50'	Black	12

### Polyolefin Glazing Tape Double Sided Adhesive

TEI6260315	.031" X .500"	216'	Black	48
TEI4206350A	.063" X .500"	108'	White	48
TEI4206375A	.063" X .750"	108'	White	32
TEI4206310A	.063" X 1.00"	108'	White	24
TEI4201500	.063" X 1.50"	108'	White	16
TEI2201257	.125" X .750"	75'	White	32
TEI2201251	.125" X 1.00"	75'	White	24

### Polyolefin Die Cuts Single Sided Adhesive

Stock No.	Size	Color	Carton Qty
TEI21025-1.56	.250" X 2.312" X 1.562"	Black	2160
TEI21025-12X5	.250" X 12.375" X 5.75"	Black	100
TEI21025-2.25	.250" X 2.25" OD	Black	4000
TEI21025-7X3	.250" X 7.5" X 3.25"	Black	400
TEI21025-2.438	.250" X 2.438" OD	Black	2000
TEI20150-4X2*	.500" X 3.83" X 1.84"	Black	910

\*No Adhesive  
Rolls may contain usable splices

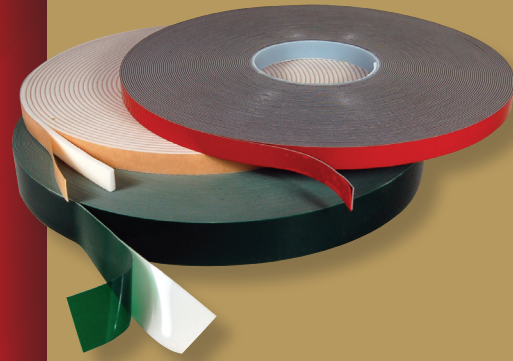


## High Bond Tapes

LaVanture Products offers the latest in Very High Bond and we represent the manufacturers, such as Gaska Tape Hi Bond Adhesive System (GHB), HB Fuller's High Bond Acrylic Tapes, or 3M VHB. All bring something unique to the table, whether it be an impregnated foam core or a solid acrylic tape, in an effort to increase production and ease of installation.

In most cases they will replace mechanical fasteners, UV stable, wide range of temperatures, vibration resistant, and are corrosion resistant.

Contact your Account Manager to help navigate through our extensive options.



### GHB Hi-Bond Tapes

Stock No.	Thickness x Width	Length	Color	Carton Qty
THB40201185	.118" X .500"	54'	White	24
THB402625375	.025" X .375"	216'	White	16
THB402625750	.025" X .750"	216'	White	16
THB402602510	.025" X 1.00"	216'	White	12
THB40262520	.025" X 2.00"	216'	White	12
THB40264575	.045" X .750"	108'	White	16
THB40264510	.045" X 1.00"	108'	White	12
THB40260850	.080" X .500"	54'	White	24
THB4026080	.080" X .750"	54'	White	16
THB40260801A	.080" X 1.00"	54'	White	24
THB40260815A	.080" X 1.50"	54'	White	16
THB452602575B	.025" X .750"	216'	Black	32
THB45260455	.045" X .500"	108'	Black	24
THB45260451B	.045" X 1.00"	108'	Black	12
THB45260631	.063" X 1.00"	108'	Black	12
THB46260901G	.090" X 1.00"	108'	Gray	12
THB4720950	.090" X .500"	108'	Gray	24
THB66260250	.020" X .500"	216'	Clear	24

### HB Fuller | ADCO | Royal

Stock No.	Thickness x Width	Length	Color	Carton Qty
LAT2045-500	.045" X .500"	108'	Gray	18
LAT3045-500	.045" X .500"	108'	Transparent	18
LAT3045-1	.045" X 1.00"	108'	Transparent	9
LAT3060-1	.060" X 1"	108'	Transparent	9
LAT3080-1	.080" X 1"	54'	Transparent	9

### 3M

Stock No.	Thickness x Width	Length	Color	Carton Qty
CHB461834	.025" X .750"	216'	White	12
CHB462212	.045" X .500"	108'	White	18
CHB46221	.045" X 1.00"	108'	White	9

HI-BOND TAPES



Available in 1 gallon and 5 gallon cans.

### Butyl Sealants

These sealants are a butyl rubber, general -purpose product formulated from a blend of butyl rubber and polyisobutylene.



### Butyl Tape

LaVanture Products distributes only high quality preformed butyl tape from the industries leading manufacturers. All tape is 100% cross-linked butyl that prevents galvanic corrosion, adheres to a variety of substrates and are In-Stock for Immediate Shipment at Factory Direct Prices Custom Sizes Available. Please contact us for information and pricing.

**POLYshim II Tape** is a 100% solid, highly adhesive and elastic, cross linked butyl preformed tape with a continuous integral EPDM shim.

### TremPro 651

TremPro 651 is specially designed for use in lower movement joints typically found in truck trailers and cabs, shipping containers, bus bodies, modular homes, and railroad cars. The product is a weather resistant exterior grade sealant that has excellent adhesion to wood, metal, glass, concrete, and masonry surfaces. TremPro 651 is a very economical and flexible general purpose sealant.

TremPro 651				
Stock No.	Description	Size	Color	Carton Qty
T651 BSL	Exterior Grade Sealant	20 oz Sausage	Black	15
T651 GSL	Exterior Grade Sealant	20 oz Sausage	Gray	15

### Butyl Tape

**TNG Series Butyl Tape** is a 100% solid cross linked butyl, a preformed sealant used for lap sealing. It adheres tenaciously to a wide variety of substrates including steel, aluminum, and porcelain. It effectively seals dissimilar metals while preventing their contact that could cause galvanic corrosion. It is extruded on silicone coated paper for easy application. It is produced in many different sizes and lengths to fit all application requirements. Applications include truck trailers, cabs, bus bodies, recreational vehicles, and modular homes.

**LBT Series Butyl Tape** is a elastomeric butyl rubber sealant designed to meet the critical requirements of metal buildings. It also meets or exceeds all sealing requirements for window glazing, air conditioning, and refrigeration. It is extruded on silicone coated paper for easy application. It is produced in many different sizes and lengths to fit all application requirements.

**LAS30A and LBC** series are butyl coated foam tapes and they offers the sealing power of butyl with the flexibility of foam tape. These are economical and production friendly and a great alternative to standard butyl tapes.

Butyl Tape				
Stock No.	Thickness x Width	Length	Color	Carton Qty
TNG3212	.094" x .500"	50'	Gray	20
LBT33234W	.094" x .750"	30'	White	24
TNG3321	.094" x 1.00"	50'	Gray	20
TNG332112	.094" x 1.50"	50'	Gray	8
LBT332112W	.094" x 1.50"	40'	White	12
TNG1812	.125" x .500"	40'	Gray	20
TNG1812BK	.125" x .500"	40'	Black	20
TNG1834	.125" x .750"	50'	Gray	12
LBT1834W	.125" x .750"	50'	White	10
LBT181W	.125" x 1.00"	50'	White	8
TNG181	.125" x 1.00"	40'	Gray	12
LBT18112W	.125" x 1.50"	30'	White	12
TNG31612BLK	.188" x .500"	30'	Black	18
TNG1414BK	.250" x .188"	25'	Black	48
TNG14316	.250" x .188"	25'	Gray	48
LBT1434W	.250" x .750"	20'	White	24
LAS30A-250	.250" DIA	15'	Black	12
LAS30A-313	.3125" DIA	15'	Black	12
LAS30A-620	.250" X .788"	15'	Black	14
LBC1101	.375" DIA	35'	Black	20

Polyshim EPDM Tape				
Stock No.	Thickness x Width	Length	Color	Carton Qty
S17DDV1760	.125" x .750"	40'	Black	12
S17DEP1760	.125" x 1.50"	35'	Black	6

LB 100 Butyl Rub Seal				
Stock No.	Description	Color	Size	Carton Qty
LB-100	Butyl Rubber Skinning	Black	10 oz Cartridge	30
LBR900BSSG	Butyl Rubber Skinning	Black	20 oz Cartridge	20



## Automotive Special Applications Weather Seals

LaVanture EPDM rubber speciality seals are designed for special applications where exposure to weather, water, electricity, light, and human contact is involved.

EPDM is a highly stable polymer closed cell sponge material that will not absorb or hold moisture and is not effected by temperature extremes. EPDM also exhibits high electrical insulative properties, unlike most elastomers it exhibits superior UV resistance.

### Specifications:

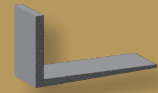
Most LaVanture EPDM rubber seals are medium density, 45-50 durometer. A small selection are dense, 65-70 durometer. These dense durometer seals are coded DD. Standard RMA tolerances apply to all the EPDM rubber seals.

### Adhesives:

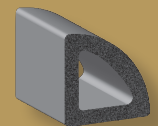
Adhesives are available for a wide variety of applications in either Heat Activated Tape System (HATS) or Pressure Sensitive Adhesive (PSA). Both options have been tested and have passed our rigid performance requirements.

EPDM Specialty Seals					
Stock No.	Description	Width x Thickness	Color	Adhesive	Carton Qty
LP2123-H	Triangle Seal, Hollow	.625" x .625"	Black	HATS	250'
LP2730	L Seal DD	2.00" x 1.125"	Black	None	200'
LP2028	Trim Gasket 85 DD	2.00" x 1.00"	Black	None	500'
SP1596	Self Seal Weather Strip	.250" x .125"	Black	None	50'
SP0445	Garage Door Seal	0.150" x 1.00"	Black	None	200'
SP2003	Slide-Out Seal	2.24" x 2.079"	Black	None	100'
TPDV810316	Gasket (cut pieces)	.188" x 6.875"	Gray	PSA	1000

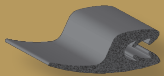
Custom Sizes Available



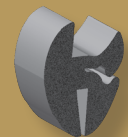
LP2730



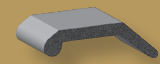
LP2123-H



LP2028



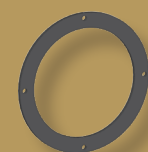
SP1596



SP0445



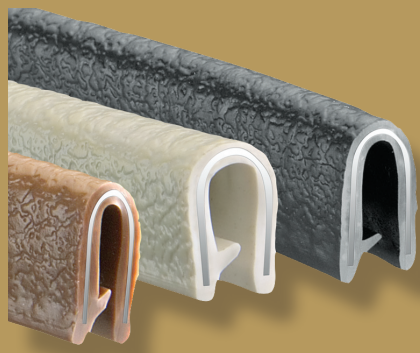
SP2003



TPDV810316

Pre-cut light gasket seal for 6¾" Triplex Manufacturing tail light model #8505

SPECIALTY SEALS



STANDARD EDGE TRIM



## Standard Trim

Standard trim is a flexible PVC Trim with metal clips inside to provide a permanent grip.

### Product Specifications:

Recommended temperature range for general applications is -20 degrees F. through +150 degrees F. Outer coating material is Vinyl (PVC) with a hardness of 80 durometer which encases the internal steel clip, preventing corrosion. Flammability and code compliance for Vinyl are: FMVSS 302 and FAA/FAR 25.853.

Standard Trim				
Stock No.	Size	Color	Carton Qty	
TS75B-32	3/32" x 7/16"	Black	250'	
TS750B5-6	1/16" x 7/16"	Black	250'	
TS100B-6	1/16" x 9/16"	Black	250'	
TS100T-6	1/16" x 9/16"	Tan	250'	
TS100W-6	1/16" x 9/16"	White	250'	
TS100B-8	1/8" x 9/16"	Black	250'	
TS100B-8A	1/8" x 9/16"	Black w/Adhesive	250'	
TS100G-8	1/8" x 9/16"	Gray	250'	
TS100W-8	1/8" x 9/16"	White	250'	
TS100T-8	1/8" x 9/16"	Tan	250'	
TS150B-8	1/8" x 9/16"	Black	250'	
TS1375W-8	1/8" x 3/4"	White	250'	
TS1375B-8	1/8" x 3/4"	Black	250'	
TS100B-3	3/16" x 17/32"	Black	250'	
TS100T-3	3/16" x 17/32"	Tan	250'	
TS100W-3	3/16" x 17/32"	White	250'	
TS150B-3	3/16" x 17/32"	Black	250'	
TS1100B-3	3/16" x 9/16"	Black	250'	
TS1375B-3	3/16" x 3/4"	Black	250'	
TS1375W-3	3/16" x 3/4"	White	250'	
TS100B-4	1/4" x 1/2"	Black	250'	
TS1350B-4	1/4" x 11/16"	Black	250'	
TS1350G-5	5/16" x 11/16"	Gray	250'	
TS1375B-2	1/2" x 3/4"	Black	250'	
Standard Trim with Bulb Seal				
Stock No.	Size	Color	Bulb Location Sz	Carton Qty
TSB1300C-6	1/16"	Black	Loc C – 3/8"	250'
TSB1300A-6	1/16"	Black	Loc A – 3/8"	250'
TSB1400A-6	1/16"	Black	Loc A – 7/16"	250'
TSB1400AB-6	1/16"	Black	Loc AB – 7/16"	250'
TSB1600AB-6	1/16"	Black	Loc AB – 5/8"	250'
TSB1700A-6	1/16"	Black	Loc A – 3/4"	250'
TSB1300C-8	1/8"	Black	Loc C – 3/8"	250'
TSB1400AB-8	1/8"	Black	Loc AB – 7/16"	250'
TSB1400C-8	1/8"	Black	Loc C – 7/16"	250'
TSB1600C-8	1/8"	Black	Loc C – 5/8"	250'
TSB1600DE-8	1/8"	Black	Loc DE – 5/8"	250'
TSB1700A-8	1/8"	Black	Loc A – 3/4"	250'
TSB1400C-3	3/16"	Black	Loc C – 7/16"	250'
TSB1600AB-3	3/16"	Black	Loc AB – 5/8"	250'
TSB1700AB-4	1/4"	Black	Loc AB – 3/4"	250'
TSB1700C-3	3/16"	Black	Loc C- 3/4"	250'
Custom Sizes Available				



**Bulb Trim**

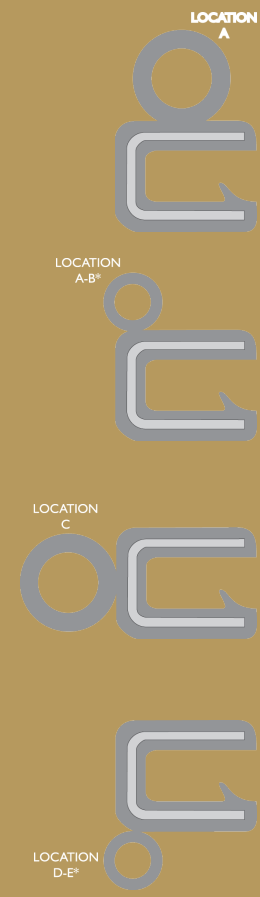
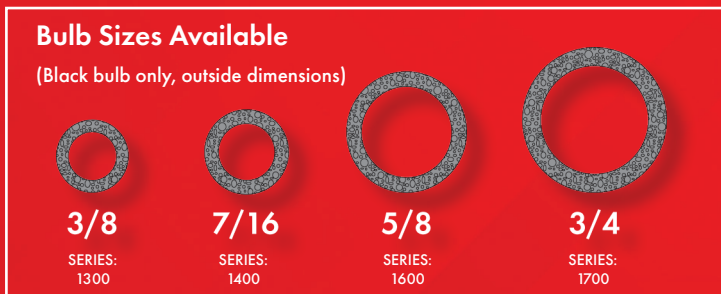
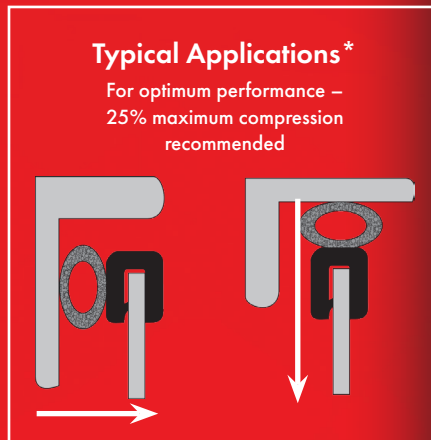
Bulb trim is a flexible PVC trim with a sponge rubber tubing Co-extruded to provide a secure seal for a variety of applications.

**Applications Include:**

- Auto Trunks • Boat Hatches • Car Hoods
- Golf Carts • Tool Boxes • Truck Caps
- RV Compartments • Doors • Utility Vehicles
- Vehicle Doors • and Many Others

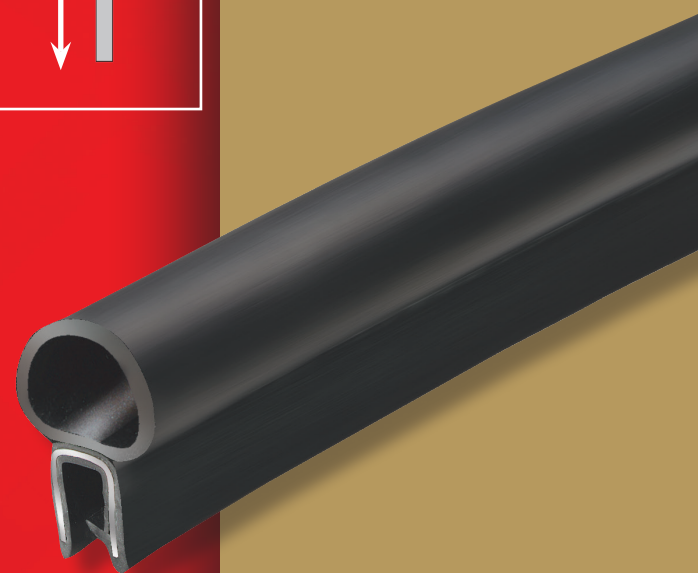
**Product Specification:**

Recommended temperature range for general applications is -20 degrees F. through +150 degrees F. Outer coating material is vinyl (PVC), hardness 80 durometer. Excellent Resistance to Water, Ozone, Sunlight, Low Temperatures and Compression Set. Flammability and code compliance for vinyl are FMVSS 302 and FAA/FAR 25.853.



\*Nonstandard location, special order

STANDARD EDGE TRIM





### Tremsil 200

**Product Description:** Tremsil 200 is a one-part, acetoxy silicone sealant that cures to a flexible rubber silicone when exposed to moisture present in the air.

**Basic Uses:** Tremsil 200 is specially designed for sealing joints between most non-porous materials such as glass, aluminum, metal and metal alloys. Applications include railroad cars, recreational vehicles, truck trailers and cabs. Industrial and residential uses include HVAC, plumbing and kitchen/bath fixtures. Tremsil 200 may also be used on site where a gun grade sealant is required. It is easily gunnable over a wide range of temperatures and has excellent adhesion to most common substrates without the use of a primer.

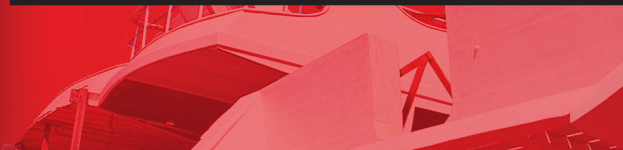
Tremsil 200		Custom Colors NOT Available	
Stock No.	Size	Color	Carton Qty
T200A	10.1 oz Cartridge	Aluminum	25
T200B	10.1 oz Cartridge	Black	25
T200C	10.1 oz Cartridge	Clear	25
T200CW	10.1 oz Cartridge	Ivory	25
T200W	10.1 oz Cartridge	White	25

### Tremsil 600

**Product Descriptions:** Tremsil 600 is a single component, medium modulus, neutral cure silicone sealant. Tremsil 600 cures to a flexible rubber silicone when exposed to moisture present in the air.

**Basic Uses:** Tremsil 600 is specially designed for sealing joints between most non-porous materials such as glass, aluminum, metal and metal alloys. Typical applications include: recreational vehicles, truck trailers and cabs. Tremsil 600 is easily gunnable over a wide range of temperatures and has excellent adhesion to most common substrates without the use of a primer. The product also has superior handling and tooling characteristics when compared to other silicones. Tremsil 600 has superior skin time, excellent ultraviolet resistance and movement capabilities. Tremsil 600 is ideal for OEM and production line applications.

Tremsil 600			
Stock No.	Size	Color	Carton Qty
TH600A	10.1 oz Cartridge	Aluminum	30
TH600B	10.1 oz Cartridge	Black	30
TH600C	10.1 oz Cartridge	Translucent	30
TH600CW	10.1 oz Cartridge	Col White	30
TH600DT	10.1 oz Cartridge	Dark Tan	30
TH600G	10.1 oz Cartridge	Gray	30
TH600LO	10.1 oz Cartridge	Light Oak	30
TH600LT	10.1 oz Cartridge	Light Tan	30
TH600TB	10.1 oz Cartridge	Beige	30
TH600W	10.1 oz Cartridge	White	30
TH600IV	10.1 oz Cartridge	Ivory	30
TH600ET	10.1 oz Cartridge	Earthtone	30
TH600CL	10.1 oz Cartridge	Clear	30
TH600MW	10.1 oz Cartridge	Martin Wood	30
Custom Colors Available			





LaVanture Products has been providing quality sealant solutions for over 40 years and in an effort to expand our capabilities we have added these economical Series LS100 and LS150 to supplement our line of quality sealants. LS Series products are Made in the USA and are economically priced.

### LS100

**Product Description:** LS100 is a one component, permanently flexible, RTV Mildew resistant silicone sealant. Manufactured for excellent adhesion to cultured marble, tile, glass, vinyl, aluminum, and sheet metal without the need of a primer and cures rapidly, when exposed to atmospheric moisture to form a durable tight bond. It is approved for cultured marble and window & door applications with excellent adhesion to glass, non-sag & slump, 50 year durability, quick curing, consistent gunability & tooling.

**Basic Uses:** Cultured Marble Applications, Window & Door Applications, Glass Replacement, Kitchen & Bath, Industrial Applications.



LS100			
Stock No.	Size	Color	Carton Qty
LS100A	10.1 oz Cartridge	Aluminum	24
LS100B	10.1 oz Cartridge	Black	24
LS100C	10.1 oz Cartridge	Clear	24
LS100W	10.1 oz Cartridge	White	24
LS100G	10.1 oz Cartridge	Gray	24
LS100KA	10.1 oz Cartridge	Khaki	24

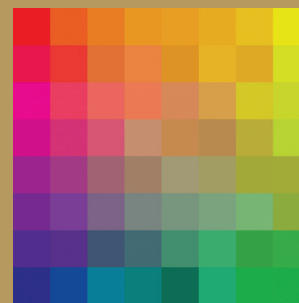
### LS150

**Product Description:** LS150 is a one component, non sag, permanently flexible neutral cure silicone sealant. Manufactured for excellent adhesion to vinyl, glass, aluminum, wood, sheet metal and most common building materials without the need of a primer and cures rapidly when exposed to atmospheric moisture to form a durable tight bond. It is AAMA and window & door approved with excellent adhesion to glass, non-sag & slump, 75 year durability, quick curing, excellent UV resistance, non-yellowing and consistent gunability & tooling.

**Basic Uses:** Window & Door Applications, Glass Replacement, Industrial Applications, Copper Sheet Metal Applications interior walls, ceilings and floors to reduce Sound Transmission Class (STC) of partition walls.



LS150			
Stock No.	Size	Color	Carton Qty
LS150W	10.1 oz Cartridge	White	24
LS150VP	10.1 oz Cartridge	Vine Pearl	24
LS150B	10.1 oz Cartridge	Black	24



#### Custom Color Matching

Color matching is also available of virtually any color whether an industry standard or a custom color. Contact us for more information



SILICONE & ACRYLIC SEALANTS



**Eco-Friendly Sealants**

These Energy Efficient Sealant or “Green” series sealants are beneficial to the effect on the environment at two levels. First, by minimizing the adverse effects pollutants have on the environment. Secondly, increasing a building’s efficiency. Increasing a building’s efficiency is made possible by reducing the amount of heat loss (or intrusion) by sealing cracks, seams, and other openings.

The environmental effect reduction is made possible by our extremely low VOC (volatile organic compounds) levels. These “Green” products have VOC levels less than that required by the national standards.

Not only do the products listed here follow a “green” standard, they go beyond the obvious. For instance, the plastic cartridges that the sealants are filled in are made with post-recycled product, and we encourage our customers to follow a “recycling” program.

All Eco-Friendly “green” products are in stock and ready for immediate shipment.

**LS25 Acrylic Latex Sealant**

**Product Description:** LS25 is a premium grade multi-purpose siliconized acrylic latex sealant. Manufactured and Developed to provide excellent adhesion to vinyl, aluminum, wood, sheet metal and most common building materials without the need of a primer. It has been specially developed for the use in the installation of windows & doors and has minimal shrinkage. LS25 cures rapidly to form a durable tight bond.

**Basic Use:** Window & Door Applications, Cultured Marble, Tile and Industrial Applications



LS25			
Stock No.	Size	Color	Carton Qty
LS25B	10.1 oz Cartridge	Black	24
LS25C	10.1 oz Cartridge	Clear	24
LS25W	10.1 oz Cartridge	White	24
LS25AD	10.1 oz Cartridge	Almond	24

**LFSB618 Expanding Foam Expanding 1-Part Energy Efficient Polyurethane Foam**

**LFSB6185 Expanding Foam** is a multi-purpose, UL-classified, one-component polyurethane foam designed specifically for window and door installation and retro-fit applications. Apply Expanding Foam onto any clean surface to fill and seal around windows and door frame joints, beneath base plates, mud sills, top plate penetrations, corner joints, T-joints, exterior cracks, around utility panels, pipes and duct penetrations. A critical advantage of this industrial/construction grade foam is its extremely low pressure build while curing, which greatly reduces the chances of bowing.

**LS Expanding Foam is designed within international guidelines for protection of the ozone layer and other environmental guidelines.**

**Applications:** Seal Exterior Openings, HVAC/R, Plumbing, Roof, Insulation, Electrical, Transportation Seals, Marine Cabins, Appliance Trim & Parts



LS500		
Stock No.	Description	Carton Qty
LFSB618	Gray Expanding Polyurethane Foam	12
LGFS165-GUN	Expanding Polyurethane Foam Gun	1



## TremPro 655

**Product Descriptions:** TremPro 655 is a high performance, siliconized acrylic latex sealant formulated to provide a fast-setting pliable seal with minimal shrinkage.

**Basic Uses:** TremPro 655 is a general purpose sealant specially designed for OEM and production line applications requiring paint ability, fast skinning and low odor. Typical uses include: trailers, trucks, buses, modular homes, RV utility bodies, and shipping containers.

TremPro 655			
Stock No.	Size	Color	Carton Qty
T655A	10.1 oz Cartridge	Aluminum	30
T655T	10.1 oz Cartridge	Tan	30
T655W	10.1 oz Cartridge	White	30

## HB Fuller EternaCaulk

**Product Descriptions:** EternaCaulk, SolidSeal, and Silaprene are high performing multi-purpose products. Technologies ranging from a thermoplastic elastomer to a silicone free rubber-based adhesive/sealant. These products offer flexibility, great adhesion, easy to use, and are economical.

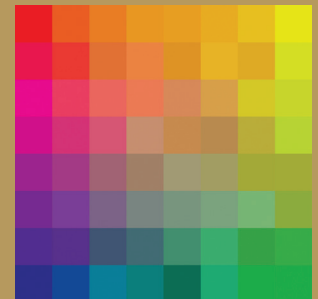
HB Fuller				
Stock No.	Description	Size	Color	Carton Qty
LEB-EKPTC-BL	EternaCaulk	10 oz Cartridge	Black	12
LEB-EKPTC-CL	EternaCaulk	10 oz Cartridge	Clear	12
LEB-EKPTC-WH	EternaCaulk	10 oz Cartridge	Black	12
LES810CSSG	EternaCaulk	20 oz Sausage	Clear	40
LES900B	EternaCaulk	10 oz Cartridge	Black	24
LES900C	EternaCaulk	10 oz Cartridge	Black	24
LES900W	EternaCaulk	10 oz Cartridge	White	24
LLS7030B-5	Low Vic Sealant	5 Gallon Pail	Black	1
RA12176W	Solid Seal	10 oz Cartridge	White	12
RA12724GSSG	Silaprene Sealant	20 oz Sausage	Gray	20
RA12742G	Nitrile Solvent Based	5 Gal Pail	Amber	1
RA12781C	Haps Free Seal	10 oz Cartridge	Clear	24
RA12788B	Haps Free Seal	10 oz Cartridge	Black	24
RA13701G	Silaprene Adhesive	10 oz Cartridge	Gray	12

Cox guns are the market-leader in handheld sealant and adhesive dispensers. Whether you're looking for a manual gun, battery gun, or pneumatic gun, we have the right gun for you. Call your Account Manager today to assist you.

Application Guns			
Stock No.	Description	Size	Carton Qty
C2N1007	White Cone Plastic Nozzle	STD	100
C41001	#7 Wexford Steel Cart Gun	10 oz	1
C41002	Jumbo Quart Cart Gun	29 oz	1
C51001	Avon 15" Manual Sausage Gun	20/10 oz	1
C5100CH-XT	Clear Sausage Avon Hook	10 oz	1
C61001	Tyne Cartridge Gun	10 oz	1
C61006-20	PHE Sausage Gun	20 oz	1



SILICONE & ACRYLIC SEALANTS



### Custom Color Matching

Color matching is also available of virtually any color whether an industry standard or a custom color. Contact us for more information



LaVanture Products is the largest distributor of Tremco Products, supplying Cargo, Marine, and RV Industries.

ADHESIVES & SEALANTS



## Polyurethane Sealants

LaVanture Products stocks and distributes a full line of quality sealants and butyl tapes from one of the leading manufacturer in the industry, Tremco Products, inc.

Tremco sealants represent over 100 years of product innovations making it the single source leader offering superior sealing solutions to the O.E.M. market. LaVanture markets a broad line of Tremco products including polyurethane, silicone, latex, organic polymer and cross linked butyl sealants to meet your industry's unique applications. Tremco products are available in cartridges, sausages and drums.

Sealants and foam tape products are all available for immediate shipment from LaVanture Products warehouses. Speciality products are also available to meet unique applications.

### TremPro 626/636

**Product Descriptions:** Vulkem 626/636 is a high performance, medium modulus, moisture-curing polyurethane sealant for use on pre-engineered metal buildings (PEMBs), HVAC units and other industrial fabrications. It was formulated to provide a pliable seal against many common industrial building materials.

(Vulkem 636 is a smooth "non-textured" version of Vulkem 626)

**Basic Uses:** Vulkem 636 was designed to seal standing seam roof laps, wall joints, roof curbs, door and window perimeters, skylights, around fastener heads and various roof penetrations. In addition, Vulkem 636 offers exceptional adhesion to a variety of metal coatings, rigid PVC, fiber-reinforced polyester, anodized aluminum and galvanized and stainless steel.

#### TremPro 626/636

Stock No.	Size	Color	Carton Qty
V626A	10.1 oz Cartridge	Aluminum	30
V626B	10.1 oz Cartridge	Black	30
V626G	10.1 oz Cartridge	Gray	30
V636GSL	20.0 oz Sausage	Gray	15

### TremPro 635

**Fast-Cure, Low-VOC, High Solids Polyurethane Sealant.** TremPro 635 utilizes a solvent-free technology, which represents technical advances over existing polyurethane systems. In addition, TremPro 635 demonstrates excellent adhesion to a wide variety of substrates, including ferrous, non-ferrous metals, Kynar finishes, composite materials and many plastic and rubber substrates. High performance, low to medium modulus, one component, gun grade polyurethane sealant. The sealant cures to a flexible rubber when exposed to atmospheric moisture.

#### Basic Uses

TremPro 635 is specially designed for use a topical sealant in the fabrication of trailers, trucks, campers, buses, trains, and speciality vehicles. It can be used in joints and seams in architectural panels and pre-engineered buildings.

#### TremPro 635

Stock No.	Size	Color	Carton Qty
V635W	10.1 oz Cartridge	White	30
V635G	10.1 oz Cartridge	Gray	30
V635B	10.1 oz Cartridge	Black	30

## TremPro 638 SSL

**Product Description:** Vulkem 638 SSL is a high performance, low modulus, one-component, semi-self leveling polyurethane sealant. The sealant cures to a flexible rubber when exposed to atmospheric moisture.

**Basic Uses:** Vulkem 638 SSL is specially designed for sealing level or slightly sloped joints and seams in railcar, truck trailer, utility trailer, roof and floor assemblies. It can also be used in horizontal joints and seams in architectural panels and pre-engineered buildings. TremPro 638 SSL cures to withstand movement, shear, deflection, and moisture in lap and butt joint applications.

TremPro 638 SSL			
Stock No.	Size	Color	Carton Qty
V638G-29	29 oz Cartridge	Gray	12
V638GD	50 gallon Drum	Gray	1
V638GSL	20 oz Sausage	Gray	15

## TremPro Chem-X Pro (One-Part Hybrid Adhesive)

**Product Descriptions:** TremPro Chem-X Pro is a single component multi-purpose, non-sagging, high strength, hybrid polymer, adhesive sealant, designed to bond to a variety of substrates that are commonly found in manufacturing. It is solvent and isocyanate free, exhibits excellent weather resistance, and has both adhesive and sealant capabilities.

**Basic Uses:** Typical applications include but are not limited to all window substrates (glass, aluminum, pvc, & fiberglass), vehicles, RVs, cargo trailers, semi-trailers, truck bodies, steel tanks, HVAC units, boats, metal buildings, modular construction, cabinets, etc.

TremPro Chem-X Pro			
Stock No.	Size	Color	Carton Qty
TX833B	10 oz Cartridge	Black	12
TX833BSL	20 oz Sausage	Black	15
TX833W	10 oz Cartridge	White	12
TX833WSL	20 oz Sausage	White	15

## TremPro LA1000

LA1000 is a high-quality adhesive based on modified polyurethanes and is three times stronger than conventional construction adhesives. This aggressive adhesive has been developed for use in commercial construction including subfloor assembly, interior drywall installation, SIPS panels, EIFS systems, landscaping bricks/blocks and natural stone. This adhesive has excellent long-term resistance to weathering, water, acids, and solvents. LA1000 has a 20-minute set time and can be applied at low temperatures. One 24-ounce can will yield the same as six to eight 20-ounce sausages, which will reduce packaging waste.

TMG501



TremPro Chem-X Pro			
Stock No.	Size	Color	Carton Qty
LA1000	24 oz Can	Natural	12



ADHESIVES & SEALANTS





LaVanture Products is proud distributor of BASF, the #1 construction chemicals company worldwide, offering comprehensive single-source solutions such as high performance adhesive, sealant and coatings for transportation and industrial applications.



# ■ - BASF

## MASTER BUILDERS SOLUTIONS

BASF products MasterBond™, MasterSeal™ and MasterCoat™ provide strong bonds and fast tack-free times. These bonds and sealants have a relatively low surface-free energy (surface tension), allowing easy adhesion to high surface energy, clean metal surfaces. Unlike other adhesives and sealants, this adhesion is achieved through chemical bonding rather than physio-chemical attraction.

This chemical bond results in cohesive failure. With cohesive failure, the adhesive or sealant bond is so strong it will rip apart before coming away from the substrate. Extensive testing is done to maximize the cohesive capability of these products under many different circumstances.

### MasterWeld 948

Gun grade polyurethane bonding adhesive that creates a permanent overnight bond. It will expand to bridge gaps up to 3/8". Good for most universal bonding applications

### MasterSeal 631 (Formerly DegaCoat 310)

MasterSeal 631 is a non-fibred asphalt emulsion specifically formulated for use as a protective underbody coating. It provides preventitive corrosion barriers for transporty applications. MasterSeal 631 is fiber-free for application by brush or spray.

## Masterweld™/MasterSeal Products

MasterWeld			
Stock No.	Size	Color	Carton Qty
DGB948-10	10.1 fl oz. Cartridge	Lt. Brown.	12
DGC310-5	5 gal.	Cures to Matte Black	1
DGC310D	53 gal.	Cures to Matte Black	2



## MasterSeal 22

MasterSeal 22 is polyurethane-based one component, moisture-curing adhesive/sealant. It maintains permanent flexibility with high bond strength providing outstanding durability.

## MasterSeal 2000

A versatile one-component multi-purpose, elastomeric adhesive sealant that provides excellent performance on a wide variety of substrates and applications. Ultra fast tack for joints and seams.

MasterSeal™			
Stock No.	Size	Color	Carton Qty
DGS22G	10.1 fl. oz Cartridge	Gray	24
DGS22W	10.1 fl. oz Cartridge	White	24
DGS2000B	10.1 fl. oz Cartridge	Black	24
DGS2000S	10.1 fl. oz Cartridge	Gray	24
DGS2000W	10.1 fl. oz Cartridge	White	24
DGS2000C	10.1 fl. oz Cartridge	Clear	24



ADHESIVES & SEALANTS



## LaVanture LS Series Specialty Sealants

LaVanture LS Series products are engineered to meet or exceed all the users specified sealant requirements. All LS series products are formulated to withstand the harshest environments and are continually tested to guarantee conformance with the high standards set by LaVanture for all of our sealant products. Applications include recreational vehicles, tractor trailers and buses. All of these specialty sealants are in stock for immediate shipment in single carton minimums.



### LS250

LS250 exhibits excellent adhesion to many substrates including aluminum, brass, steel, glass, mortar, granite, marble, wood and many plastics. Cures fast, even at low temperatures. Contains no solvents or isocyanates and is non-yellowing.

### LS255

#### Semi-Self Leveling Roof Sealant

LS255 exhibits excellent adhesion to many substrates including: aluminum, brass, steel, glass, mortar, granite, marble, wood and many plastics. Cures fast, even at low temperatures. LS255 is highly weather resistant and can be painted with most paints. Contains no solvents or isocyanates and is non-yellowing. Authorized by the USDA.

#### LPC Sealants/Adhesives

Stock No.	Material	Size	Color	Carton Qty
LS250W	Hybrid	10.3 oz Cartridge	White	24
LS250G	Hybrid	10.3 oz Cartridge	Gray	24
LS250B	Hybrid	10.3 oz Cartridge	Black	24
LS255G	Hybrid	10.3 oz Cartridge	Gray	24

LS Series Sealants are specially formulated for LaVanture products to meet the requirements of the Transportation, Recreational Vehicle and O.E.M industries. Custom formulas and colors are available. Please contact us for information and pricing.



## THE STRONGEST FROM START TO FINISH

#### Liquid Nails

Stock No.	Material	Size	Color	Carton Qty
LNP902-28	Latex	28 oz. Cartridge	White	12
LN903HD-10	Latex	10 oz. Cartridge	Tan	24
LN990QG-10	Latex	10 oz. Cartridge	White	12
LNP602-5	Rubber	5 Gal Pail	Light Tan	1
LNx01MH-28	Rubber	10 oz. Cartridge	Light Tan	24
LN715TS-10	Vinyl Acrylic	10 oz. Cartridge	White	24
LN730M-10	Silicone	10 oz. Cartridge	White	12

Contact Us About Freeze/Thaw Stability Questions. Liquid Nails offers a wide variety of options to fit your application needs. Chose from latex, rubber, silicone for mirrors, and vinyl acrylic.

## Eternabond Roof Products

**RoofSeal:** Seal any rip, tear, or open seam in any surface with RoofSeal. RoofSeal is the best solution for leak repair. It is the choice of professional roof repair specialists, on virtually all roof types including EPDM, TPO, Hypalon, most PVC, modified, all metals, even copper and Kynar coated metals, tile, wood, concrete, etc. RoofSeal makes a permanent water-tight seal. Formulated as strong, fast drying, thermoplastic rubber adhesive sealants with controlled flow viscosity these products offer easy application and adhere to most surfaces including glass, fiberglass, steel, aluminum, rubber and most painted surfaces.

**RV Seal:** offers the same water-tight seal in a thinner profile of 21 mil thick.

**Spray Primer:** EternaPrime® is an adhesive and surface conditioner intended to aid adhesion of EternaBond® MicroSealant tapes, or other non- MicroSealant tapes such as butyl tapes and other self adhesive seaming tapes. EternaPrime® also prepares most contaminated surfaces for tape application.

**AlumniBond Tape:** Designed for use on metal buildings, trailer/RV roofs and sides, drain pans, drain pipes, ductwork, boats and as protective coating for surfaces where abrasion and corrosion resistance is required.

**DoubleStick Tape:** A self-sealing adhesive creating a water-tight between two or more irregular or similar or dissimilar surfaces. Used as a lap seal, gasket, hole seal or gap seal.

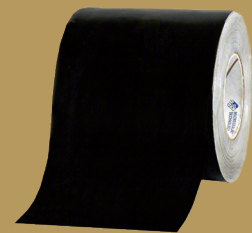
**Anti-Wick:** PVA/VA-E based adhesive that is designed to seal the ends and sides of materials such as plywood and OSB to keep moisture out.



ADCO/Eternabond is an integrated adhesives and sealants company with operations strategically located around the world. Their technologies are integral to many cutting-edge industrial trends, contributing to a more efficient, more productive and more sustainable future. LaVanture Products is proud to have been selected as an Adco/Eternabond distributor.

ETERNABOND SEALANT TAPE

ADCO/EternaBond Products				
Stock No.	Description	Size	Color	Carton Qty
LRSB-2-50	Microsealant Roof Seal	2" x 50'	Black	12
LRSB-3-50	Microsealant Roof Seal	3" x 50'	Black	8
LRSB-8-50	Microsealant Roof Seal	8" x 50'	Black	3
LRSB-24-50	Microsealant Roof Seal	24" x 50'	Black	
LRSG-2-50	Microsealant Roof Seal	2" x 50'	Gray	12
LRST-3-50	Microsealant Roof Seal	3" x 50'	Tan	8
LRSW-1.5-50	Microsealant Roof Seal	1.5" x 50'	White	16
LRSW-2-50	Microsealant Roof Seal	2" x 50'	White	12
LRSW-3-50	Microsealant Roof Seal	3" x 50'	White	8
LRSW-4-50	Microsealant Roof Seal	4" x 50'	White	6
LRSW-6-50	Microsealant Roof Seal	6" x 50'	White	4
LAB-2-50	AlumniBond Tape	2" x 50"	Aluminum	12
LAB-4-50	AlumniBond Tape	4" x 50"	Aluminum	6
LOPS-1	Spray Primer	12.2 oz can	Clear	12
LDS-1-50	Double Stick Tape	1" x 50'	Black	24
LDS-2-50	Double Stick Tape	2" x 50'	Black	12
LRVST-2.75-100	Micro Sealant RV Seal	2.75"x 100'	Tan	8
LRVSW-2.5-100	Micro Sealant RV Seal	2.5"x 100'	White	8
LRVSW-2.5-50	Micro Sealant RV Seal'	2.5"x 50'	White	8
LRVSW-2.75-100	Micro Sealant RV Seal'	2.75"x 100'	White	8
LRVSW-2-50	Micro Sealant RV Seal	3"x 50'	White	12
LLS7030B-5	Low Viscosity Adhesive Sealant	5 gallon Pail	Black	1
LMS7035B-5	Mid Viscosity Adhesive Sealant	5 gallon Pail	Black	1
LMS7036A-5	Mid Viscosity Adhesive Sealant	5 gallon Pail	Aluminum	1
LLS7030B-5	Low Viscosity Adhesive Sealant	5 gallon Pail	Black	1
LMS7035B-5	Mid Viscosity Adhesive Sealant	5 gallon Pail	Black	1
LMS7036A-5	Mid Viscosity Adhesive Sealant	5 gallon Pail	Aluminum	1
LLPC7763B-5	HydroArmor	5 Gal Drum	Black	20
RA13180-5	Synthetic Rubber	5 Gal Drum	Green Tint	1
RA13180D	Synthetic Rubber	54 Gal Drum	Green Tint	1
RA13678B-5	Anti-Wick	5 Gal Pail	Black	1
RA13680W-5	Anti-Wick	5 Gal Pail	White	1
RA13680WD	Anti-Wick	55 Gal Drum	White	1





## Advanced Adhesive Technologies (AAT)

AAT is the leader in adhesives technology. Their adhesives cover the entire range of floor covering products, from carpet and ceramic tile to wood flooring and vinyl sheet goods.



**AAT272:** Specially formulated water-based adhesive designed not only for the installation of felt backed sheet vinyl but also solid vinyl sheet goods [including “fiberglass” backed] intended for full-spread installations. AAT-272 can also be used to install linoleum, vinyl [12”x12” max.] or rubber tiles [24”x24” max.]. This unique adhesive will not stain or discolor resilient floors and eliminates the need to inventory several different adhesives for various types of sheet vinyls from a variety of manufacturers. This Super-Premium product provides adequate “slip time” and greatly reduces the “gassing” tendency common with most adhesives when installing nonporous floor coverings. While this adhesive is specifically intended for the installation of resilient floorings it can be used to install virtually any carpet regardless of the backing type.



**AAT322:** AAT-322 FG Sheet Vinyl PSA is an acrylic based adhesive specifically formulated for installing sheet vinyl with fiberglass cores and PVC cushioned backs intended for use with pressure sensitive adhesives (PSA). AAT-322 can be used on all grade levels over concrete and approved wood sub-floors in the absence of excessive moisture emissions and alkalinity. (MVER max. 5lbs./ 1000 sq ft/ 24 hours ASTM F 1869, RH 75% ASTM F 2170, pH 5-10) AAT-322 is nonflammable, contains no carcinogens, no solvents and is non-toxic. AAT-322 has excellent plasticizer migration resistance. AAT-322 is freeze-thaw stable. This zero VOC adhesive is protected by the CleanGuard® two-stage antimicrobial.

CleanGuard® is a specifically formulated broad-spectrum, anti-microbial agent that protects our adhesives and sealers from microorganisms, such as mold or mildew, in both the wet and dry state.



**AAT MB188:** Masterbond 188 is a 0 VOC, fast tack adhesive designed for the installation of glue-down carpets. This nonflammable adhesive is protected by the CleanGuard® two-stage antimicrobial. CleanGuard® is a specifically formulated broad-spectrum, anti-microbial agent that protects our adhesives and sealers from microorganisms, such as mold or mildew, in both the wet and dry state. Masterbond 188 is recommended for use with the following carpet backings: woven polypropylene (ActionBac®), polyurethane foam, jute, rubber, and needlepunch. Due to its non-staining formula, Masterbond 188 can be used to install felt backed sheet vinyl. NOTE: This adhesive is not recommended for pure vinyl backed sheet goods or carpets.



AAT Products			
Stock No.	Description	Size	Carton Qty
AAT272	Flooring Adhesive	4 Gal	1
AAT322	Flooring Adhesive	4 Gal	1
AATMB188	Flooring Adhesive	4 Gal	1

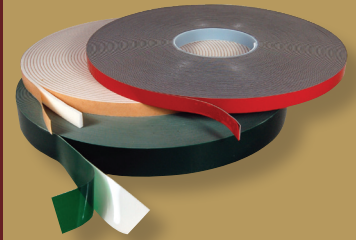
## Structural Adhesives

LaVanture offers some of the most advanced structures adhesives from some of the best manufacturers in the world! Structural adhesives offer a great alternative to mechanical fasteners. With a wide variety of options, whether you are looking for a gun grade Hybrid Polymer with great green strength, a Polyurethane with a slightly longer 'Open' worktime, or an adhesive that is in a tape form. These specialty adhesives offer additional benefits like vibration distribution, production efficiency, and flexibility. Our products meet or exceed industry standards, all with competitive pricing and sales support.

**LK140** is one-part gun grade polyurethane that replaces mechanical fasteners in most applications. This adhesive sealant has a permanent elasticity and is a fast moisture curing adhesive. Weather resistant temperature range of -80 F to 200 F.

**ChemX** has exceptional green strength, virtually giving your production team an extra hand. A single component hybrid polymer has an average Open worktime of under 15 minutes, great flexibility, and is solvent and isocyanate free.

**3M 760** is a Silane Modified Polymer (SMP). This single component creates a weather-resistant malleable bond between dissimilar substrates. Exhibits excellent UV resistance and maintains its flexibility for long-term joint movement.



VHB tapes, see page 12.



STRUCTURAL ADHESIVES

Structural Adhesives				
Stock No.	Description	Size	Color	Carton Qty
LK140BSSG	Korapur Polyurethane	20 oz Sausage	Black	12
LK140WSSG	Korapur Polyurethane	20 oz Sausage	White	12
3M-560	Polyurethane	20 oz Sausage	White	12
3M-760	Silane Modified Polymer	20 oz Sausage	White	12
TX833B	Hybrid Polymer	10 oz Cartridge	Black	12
TX833BSL	Hybrid Polymer	20 oz Sausage	Black	15
TX833W	Hybrid Polymer	10 oz Cartridge	White	12
TX833WSL	Hybrid Polymer	20 oz Sausage	White	15



# Sealant Technical Specifications

Product No.	Technology	Adhesive/Sealant	Strength	Paintable	Tack Free Time Hours	Full Cure Hours	Shelf Life Months	VOC Meets Threshold	Flexibility
LN990QG-10	Latex	Adhesive	8	Yes	1	24	12	No	200
LNP902	Latex	Adhesive	10	Yes	0.5	24	12	Yes	200
LA1000	Polyurethane	Adhesive	10	NA	0.5	24	15	No	0
LNP602	Solvent Elastomeric	Adhesive	8	Yes	0.25	24	12	Yes	800
LNx-01	Solvent Elastomeric	Adhesive	10	Yes	0.25	24	12	No	600
LES900	Elastomeric Sealant	Adhesive/Sealant	7	Yes	0.5	24	12	No	400
LS255	MS (hybrid polyether)	Adhesive/Sealant	7	Yes	0.5	24	12	Yes	341
TX833	MS (hybrid urethane)	Adhesive/Sealant	10	Yes	0.25	72	12	Yes	412
RA12608(SolidSeal)	Polyurethane	Adhesive/Sealant	8	Yes	0.75	72	12	Yes	400
DGB948	Polyurethane	Adhesive/Sealant	9	Yes	1.5	2	12	Yes	0
LK140	Polyurethane	Adhesive/Sealant	10	Yes	0.75	72	12	Yes	400
RA12176(Solid Bond)	Polyurethane	Adhesive/Sealant	10	Yes	0.75	72	12	Yes	500
LS250	SPUR (hybrid urethane)	Adhesive/Sealant	8	Yes	0.5	24	12	Yes	500
LAT2	Foam Core	High Bond Tape	10	NA	NA	NA	24	Yes	900
CVF	Foam Core	High Bond Tape	10	NA	NA	NA	12	Yes	0
THB	Foam Core	High Bond Tape	10	NA	NA	NA	12	Yes	0
LAT3	Solid Acrylic	High Bond Tape	10	NA	NA	NA	24	Yes	500
T200	Acetoxy Silicone	Sealant	0	No	0.5	24	12	Yes	500
LS100	Acetoxy Silicone	Sealant	0	No	0.5	24	24	Yes	570
T655	Acrylic Latex	Sealant	0	Yes	0.25	24	12	Yes	200
LS25	Acrylic Latex	Sealant	0	Yes	0.5	72	24	Yes	350
DGS310	Asphalt Eemulsion	Sealant	0	No	1	12	6	Yes	0
RA12781(Silaprene)	Block Copolymer	Sealant	0	Yes	0.5	24	12	No	500
LB-100	Butyl Coated Foam	Sealant	0	No	Skinning	Non-Cure	24	Yes	0
T651	Butyl Rubber	Sealant	0	Yes	24	72	12	No	0
LNTG	Elastomeric Acrylic Urethane	Sealant	0	Yes	0.5	72	24	Yes	800
RA12724(Silaprene)	EPDM Polymer	Sealant	0	Yes	0.5	24	12	No	400
TH600	Neutral Silicone	Sealant	0	No	0.5	72	12	Yes	500
LS150	Neutral Silicone	Sealant	0	No	0.5	30	18	Yes	650
V626	Polyurethane	Sealant	0	Yes	48	72	12	Yes	200
V635	Polyurethane	Sealant	0	Yes	0.75	72	12	Yes	600
V638	Polyurethane	Sealant	0	Yes	0.75	2	12	Yes	600
DGS22	Polyurethane	Sealant	0	Yes	0.5	72	12	Yes	800
Eternabond	Thermoplastic	Sealant		No	NA	NA	60	Yes	550
DGS2000	Thermoplastic Elastomeric	Adhesive/Sealant	0	Yes	0.5	336	6	No	550
ANTI-WICK	Water based	Sealant	0	Yes	0.5	24	12	Yes	0

NONE

GOOD

BETTER

BEST

EXCELLENT

# Industry Applications Chart

## ELECTRICAL

Wire Looms  
Flexible Aluminum Ducts  
Electrical Connectors  
Coated Clamps  
Cable Ties  
Snap Bushings/Plugs  
Fireplaces

## PLUMBING

Tanks  
Compartment Hatches  
Fill Hoses  
Pressure Hoses  
Dump Valves  
Hose Clamps

## POWER ACCESSORIES

4-Way Connectors  
7-Way Connectors  
Battery Boxes/Trays  
Breakways  
Converters/Chargers  
Electric Jacks

## TRIMS/SEALS

Standard Edge Trims  
Hollow Bulbs  
Rectangular Bulbs  
Wipers  
Screw Covers  
Foam Tapes

## TAPES

Electrical Tapes  
Foam Tapes  
Conspicuity/DOT Tapes  
Marking Tapes  
Glazing Tapes

## LIFT ASSISTS

Gas Springs  
Brackets  
Traction Springs  
Actuators

## SEALANTS & ADHESIVES

Latexes | Silicones  
Butyls | Urethanes  
Spray Adhesives  
EternaBond Tapes  
Light Duty Tapes



## EMERGENCY

Fire Extinguishers  
Extinguisher Pockets  
Triangle Kits  
Smoke/CO Alarms

## STRUCTURAL ADHESIVES

Mounting Tapes  
Hybrid Adhesives  
VHB Tapes

## ROOF SEALANTS

EnteraBond  
Self Leveling Urethanes  
AlumiBond  
RV Seal

## MOLDED EXTRUDED

Grab Handles  
Screw Covers  
Door Hold Backs  
Battery Box  
Reserve Covers  
Bushings/Plugs  
Rigid Dividers

## HARDWARE

E-Track  
Gas Props  
Gas Prop Brackets  
Traction Springs  
Actuators  
Rope Tie Downs

## SAFETY

Fire Extinguishers  
Extinguisher Pockets  
Smoke/CO Alarms  
Marine Grade Grit Tapes  
Fencing Tapes  
Safety Kits



CHECK OUT OUR COMPLETE LINE OF PRODUCTS



Molded Extruded | Hardware | Trims & Seals

### LaVanture Guarantee

LaVanture Products puts a great deal of effort into vetting our suppliers and the products that we supply our industries. However, things can happen, which is why all products are backed by 12 months free from manufacture defects. Contact us for more details.

3806 Gallatin Way  
Post Office Box 2088  
Elkhart, IN 46515-2088

Phone: 574-264-0658  
Fax: 574-264-6601  
E-mail: sales@lavanture.com

www.lavanture.com

### PROUD MEMBERS



UPDATED MAY 2026